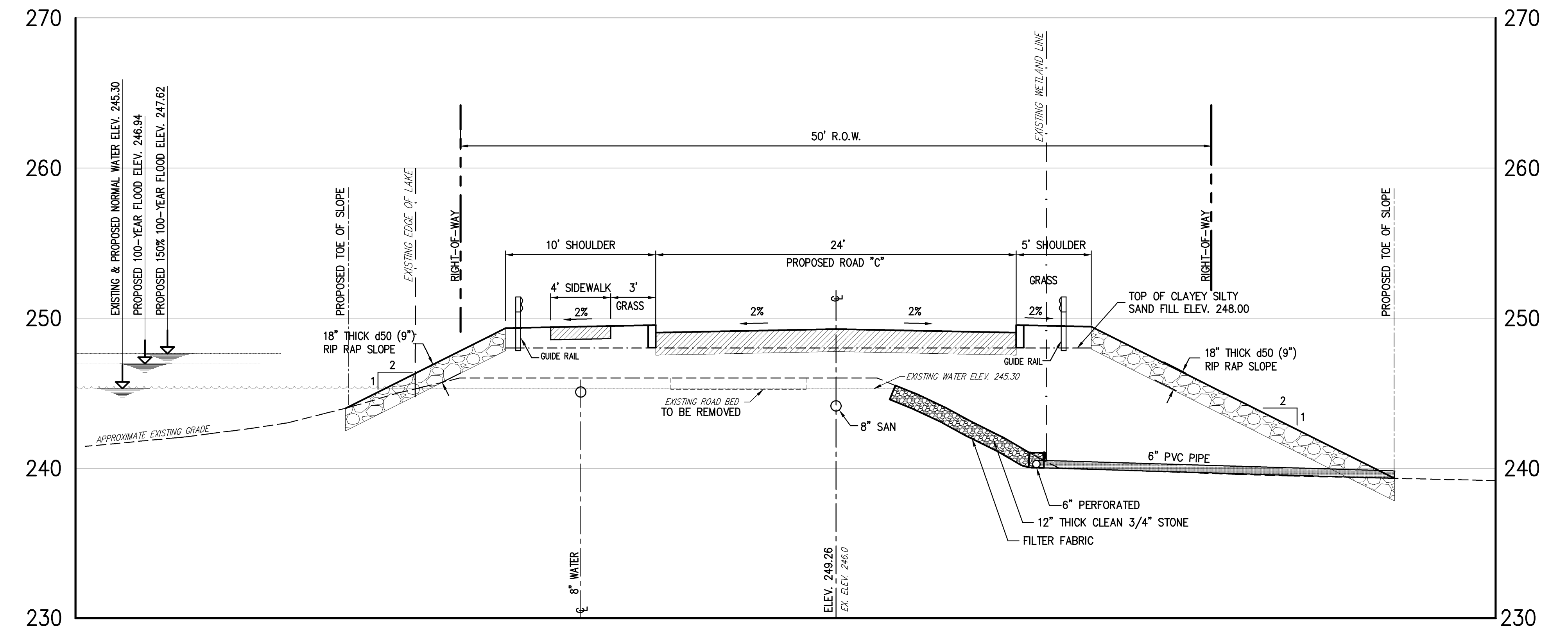
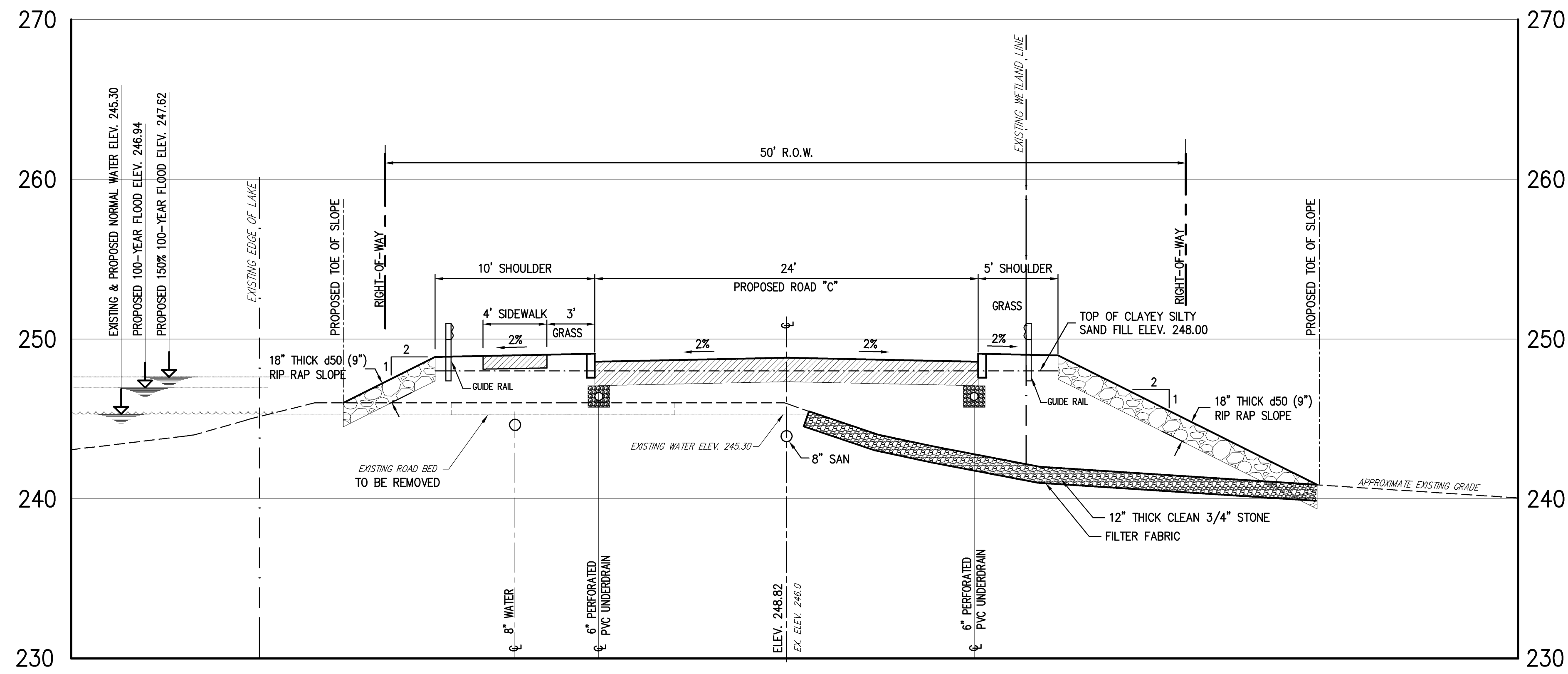


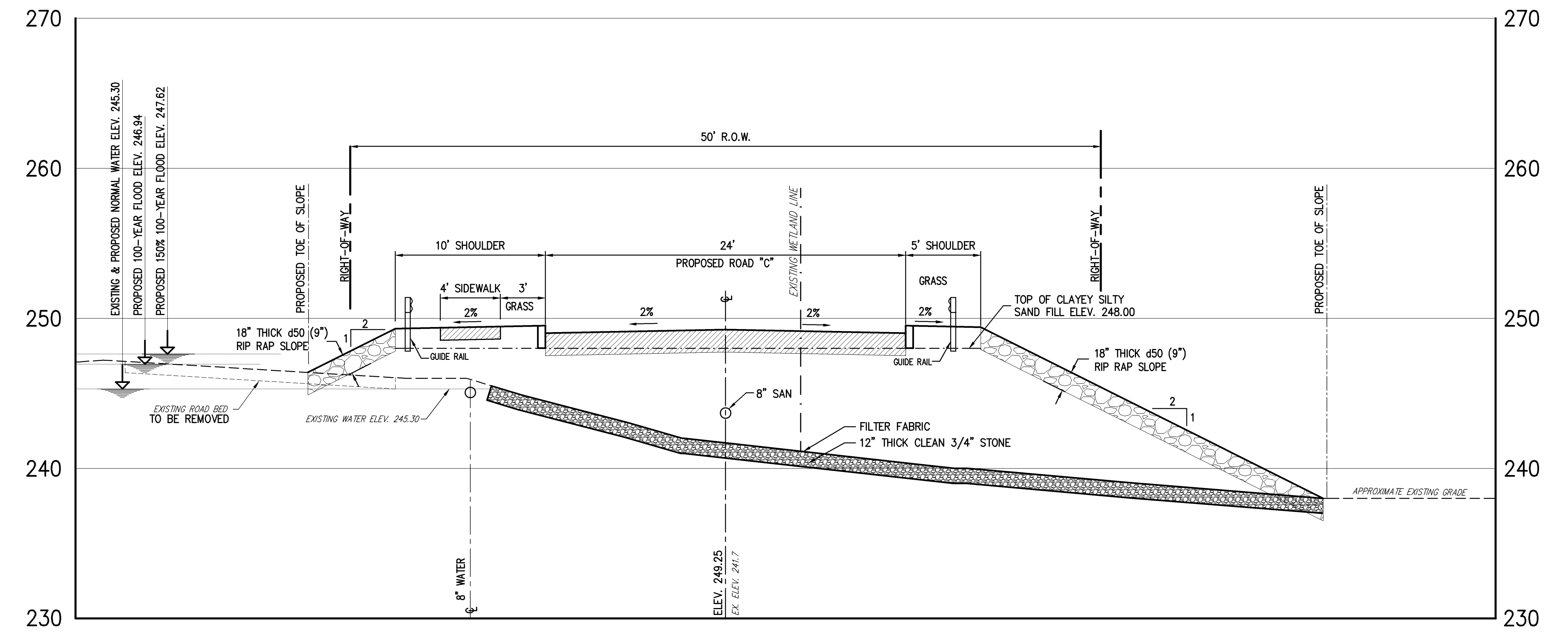
STATION 61+50



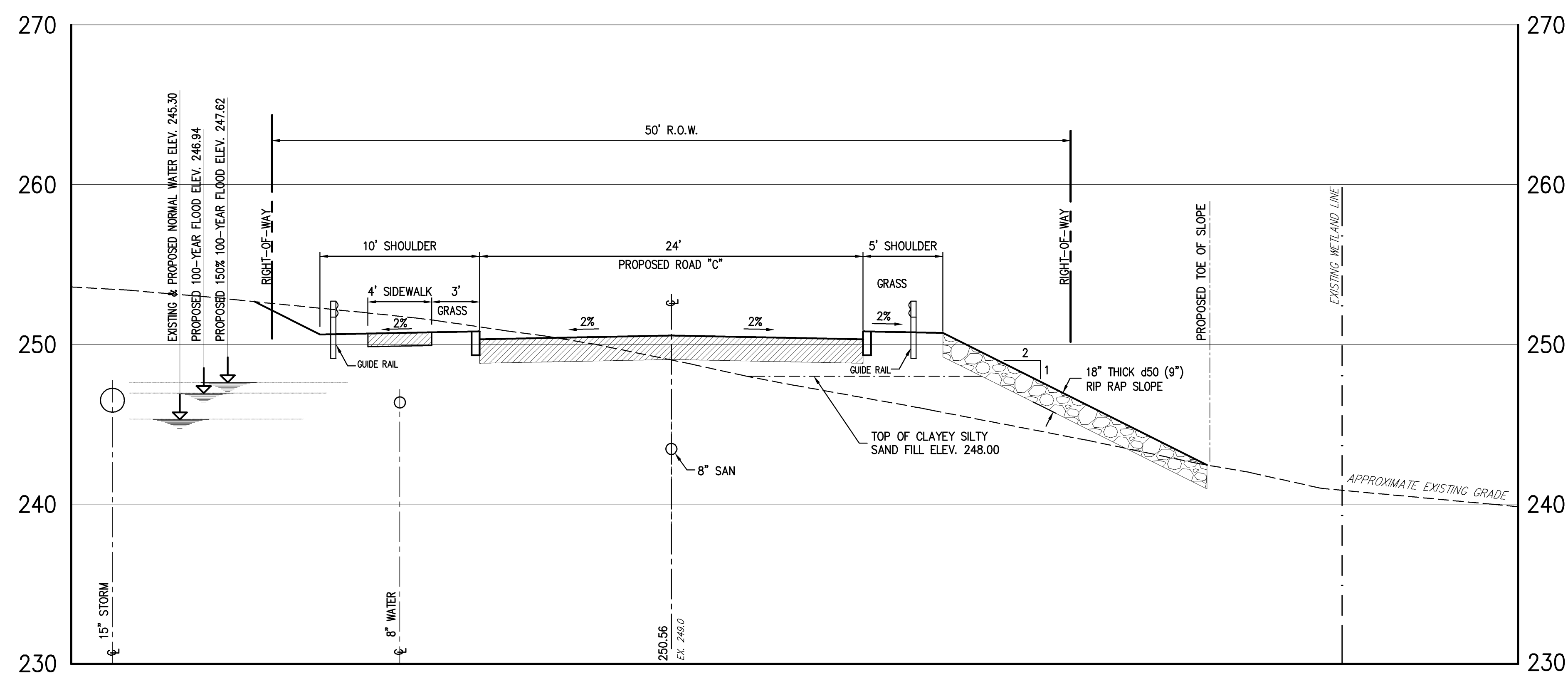
STATION 62+00



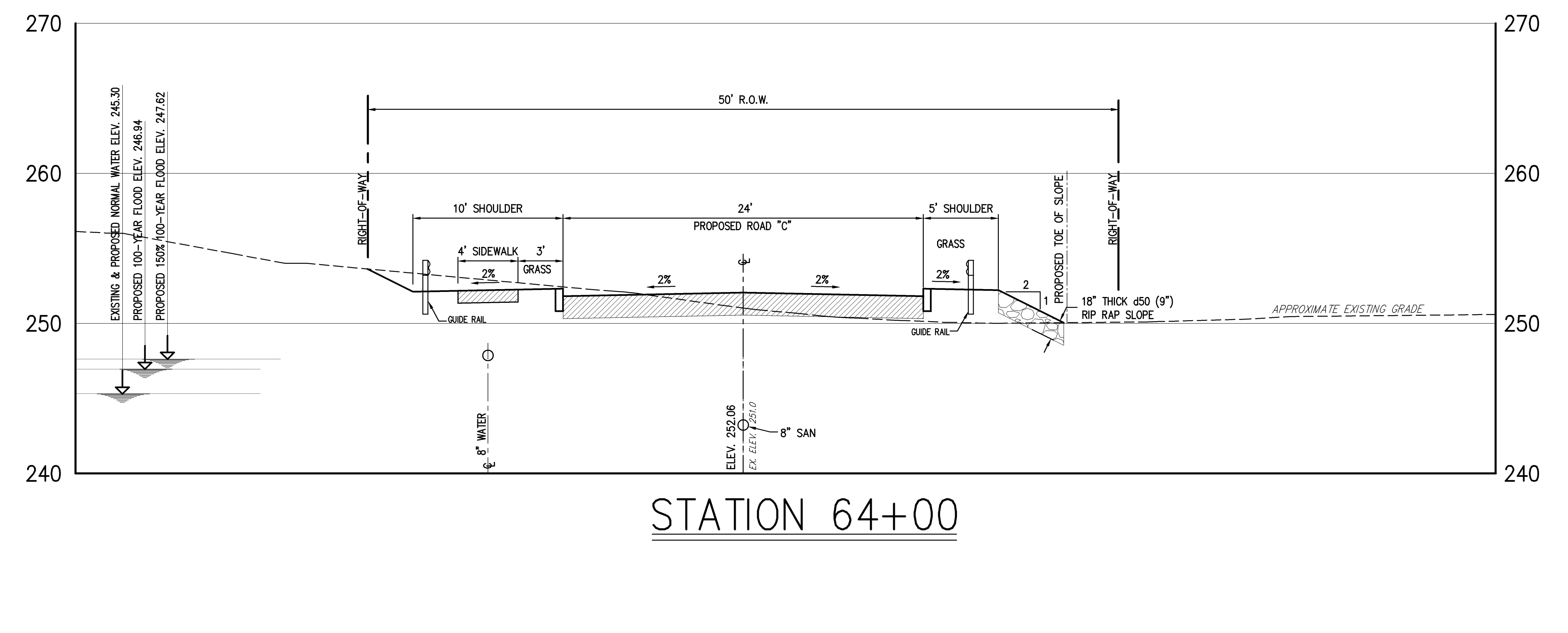
STATION 62+50



STATION 63+00



STATION 63+50



STATION 64+00

DATE	12/13/2006
BY	MA
REVISION	
1	REVISED AS PER INSET AND TOWN COMMENTS
2	SUBMIT TO INSET

LAKE WALTON PARK, LLC
 150 NORTH WACKER DRIVE - SUITE 1120
 CHICAGO, IL 60606

JMC
 JOHN MEYER CONSULTING
 120 Bedford Road
 Armonk, NY 10504
 voice 914.273.5225 • fax 914.273.2102
 mail@johnmeyerconsulting.com

DAM CROSS SECTIONS
 LAKE WALTON PARK
 TOWN OF EAST FISHERILL, NY

DATE	08/08/2005
BY	JM
SCALE	1"=5'
PROJECT NO.	3006
DAM SECTION	SECTION-316
DD-5	